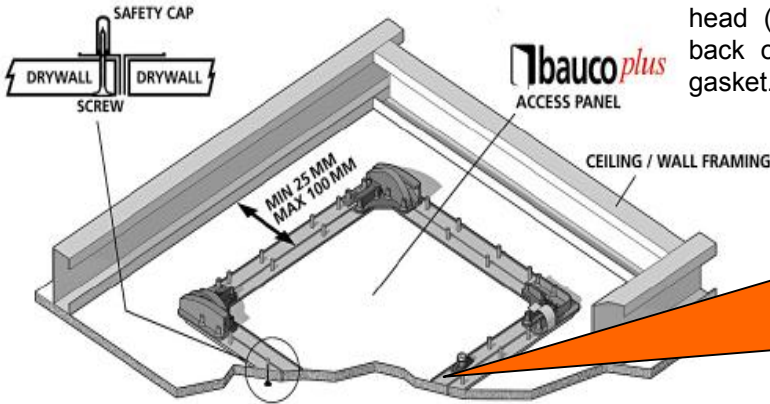


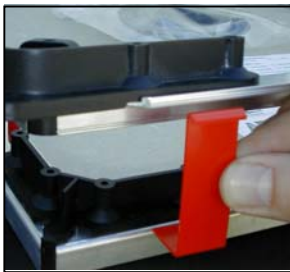
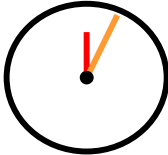
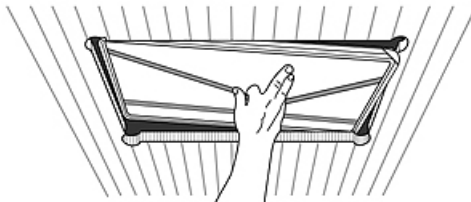
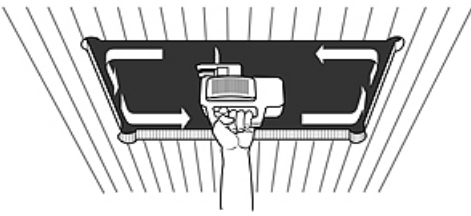
baucoplus Access Panel Solutions *How to install!*

Tools you need: Router or saw, screwdriver, drywall fasteners with self-drilling tecks point, tape measure.

Check contents: Access panel, 2 installation aides (yellow), 2 retaining catches (red), 2 coil springs, fastener safety covers (red), masking disc for latch head (yellow), yellow masking cord. Fastened to back of door panel you find a self-adhesive PVC gasket.



Important:
Panel fastens to gypsum board. The frame is used as a bead and requires finishing. Should be installed, while boarding, prior to mudding and taping.



Rough opening preparation (Wall or Ceiling)

Rough Opening in Drywall = Door size + 1/4" 6 mm (for example: 12 1/4 x 12 1/4 or 306 x 306 mm)

Clearance to studs/furring: Minimum = door size + 1" (25 mm) Maximum = door size + 4" (100mm)

Clearance behind panel = 3-6 inches (75-150 mm) depending on size.



Installing the Safety Catches (red)

The hooks are red and prevent the door from swinging down when latches are opened. Pick up access panel and open the door.

Insert the short leg of each hook in the space between black plastic and aluminum along the latch side of the door. Hooks will catch on outside frame unless pushed out of the way.



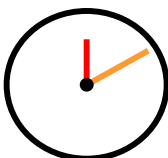
Installing Coil Springs

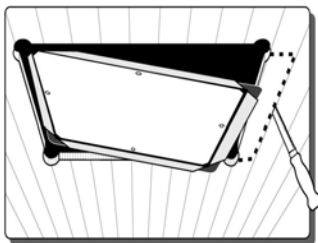
Springs assist in opening of door. Push the coils springs onto plastic cones inside of left and right corner of the outside frame (latch side). Close the door.

Inserting Installation Handles (yellow).

With closed door, insert the yellow installation handle from the back of the panel next to each of the hinge corners. The handle fit through the crack between door and frame.

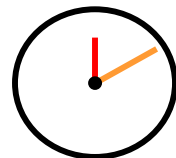
The longer side of feet to rest on outer frame.





Placing Access Panel into Rough Opening

Take the access panel and insert into rough opening. Use the yellow installation handles to pull into position. Hint: If you don't have enough back clearance (6 inches/ 150 mm) to pass panel diagonally through rough opening, cut wider on oneside. Insert panel and close up extra opening. Fasten patch to stud and to panel frame.



Placing Fasteners into frame.

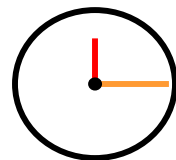
Clip the fastener position indicator into the yellow handle and slide the handle as far as possible toward one corner.

Pull frame against gypsum board and place first fastener through-board into aluminum frame.

Check alignment in opening and place second fastener kitty-corner (diagonally) to the first fastener. Move handle along the frame and place more fasteners on 3 inch spacing.

Open door and move handles onto the remaining two sides of panel.

Close the door and continue placing fasteners.

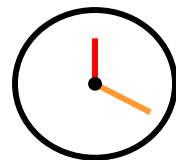


Corner Fasteners

Mark fastener position in all 4 corners. The right position is at 45° at 7/8 inch (24 mm) from the door corner.

Note: Fastener should not be placed into hinge mechanism.

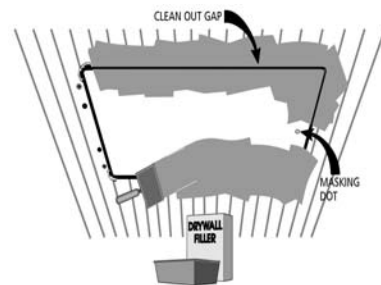
Hint: If door does not want to open: clean the gap between door and frame. Check that fasteners have not been set into the hinge mechanism and are blocking it.



Finishing / Mudding

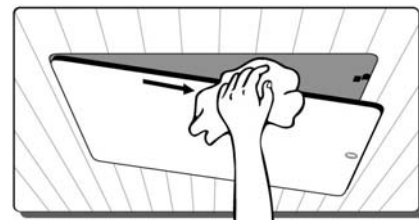
Remove installation handles. Place safety covers (red) onto fastener tips. Close door. Place the self-adhesive masking disk on each latch head and use yellow elastic cord to mask the gap between door and frame.

Mud to proud aluminum frame. Clean excess mud by pulling on yellow cord. Avoid mud in hinge mechanism.



Sanding, Clean up & Gasket installation

Sand until the edge of the aluminum frame is fully visible. Do not leave any compound covering this edge as it will break off. Open door. Remove masking disks from latch heads.



Clean frame. Apply gasket along back edge of the outside frame between the black corner-spacers. Cut to appropriate length. Do not cover the plastic corner spacers.

